

Denewood, Forest Hall NE12

OIRO £650,000



Full Description

Alexander Hudson Estates are delighted to bring to the market this superb five bedroom detached family home. Well positioned on this exclusive and much sought after residential development in Killingworth Village. The property has been extended and upgraded to offer generous and beautifully appointed accommodation, finished to a superb standard throughout, set within an attractive and mature garden site with triple garage and driveway parking for several cars.

Entrance door to a welcoming and open hallway offering cloakroom/wc and stairs to the first floor. Lounge which enjoys glazed double doors giving access to a light and airy sitting room which offers windows to three elevations and French doors give access to the garden. Beautifully appointed fitted kitchen including numerous integrated appliances and central island. A separate formal dining room and utility room, gym and home office complete the ground floor accommodation. To the first floor is a principal bedroom suite with en suite shower room/wc , including twin walk in showers and vanity basins. Three further double bedrooms, one of which has en suite shower room and a family bathroom/wc. Second Floor double bedroom with walk in wardrobe. Landscaped gardens surround the property with summerhouse and detached triple length garage.

Killingworth has evolved from its mining heritage into a modern, thriving town. The area offers a wide range of amenities, centred around the White Swan Shopping Centre with supermarkets, local shops, welcoming pubs, and restaurants. Outdoor spaces include Killingworth Boating Lake, local bridlepaths, and nearby nature reserves, providing excellent opportunities for leisure and recreation. Transport links are strong, with bus services to Newcastle and surrounding areas and easy access to the A19 for commuters. Families are well served by schools including George Stephenson High School and several local primary schools.

Features

- Superb five bedroom detached family home.
- Exclusive and much sought after residential development in Killingworth Village.
- Extended and upgraded to offer generous and beautifully appointed accommodation .
- Surrounded by landscaped gardens with summerhouse and detached triple length garage.

Contact Us

Alexander Hudson

The Printworks, 20 Arrow Close
Killingworth
Newcastle Upon Tyne
NE12 6QN

T: 0191 268 7433

E: sales@alexanderhudson.co.uk

















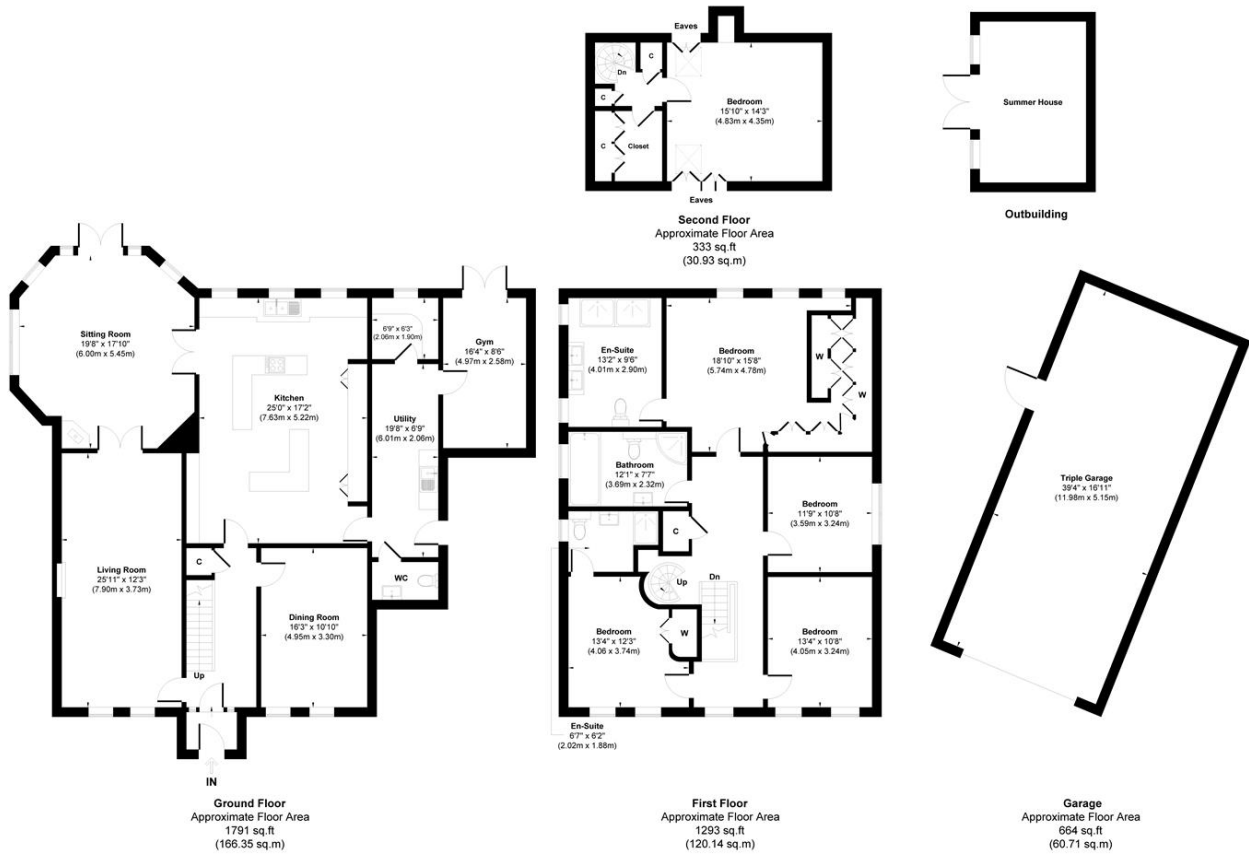
Energy Efficiency Rating

	Current	Potential
Very energy efficient - lower running costs		
(92 plus) A		
(81-91) B		
(69-80) C	74	76
(55-68) D		
(39-54) E		
(21-38) F		
(1-20) G		
Not energy efficient - higher running costs		
England & Wales	EU Directive 2002/91/EC	

Environmental Impact (CO₂) Rating

	Current	Potential
Very environmentally friendly - lower CO ₂ emissions		
(92 plus) A		
(81-91) B		
(69-80) C	74	76
(55-68) D		
(39-54) E		
(21-38) F		
(1-20) G		
Not environmentally friendly - higher CO ₂ emissions		
England & Wales	EU Directive 2002/91/EC	





Approx. Gross Internal Floor Area 4081 sq. ft / 378.13 sq. m (Including Garage & Excluding Outbuilding)

Illustration for identification purpose only, measurements approximate and not to scale, unauthorized reproduction is prohibited. All rights reserved for Alexander Hudson Estates