

Edgemount, Killingworth, NE12

OO £290,000



Full Description

Alexander Hudson Estates are delighted to present this beautifully maintained three-bedroom detached family home, set on a generous corner plot in the highly sought-after residential area of Killingworth, NE12.

The property offers inviting open-plan living throughout. The entrance porch opens into a spacious dining area, a modern kitchen complete with a range cooker, and breakfast bar which in turn leads to a useful utility room with fitted base units and space for a washing machine and fridge freezer. A bright and generously sized sitting room spans the rear of the property, large media wall with doors opening directly onto the west facing garden.

Upstairs, there are three well-proportioned bedrooms, two with fitted wardrobes and a contemporary family bathroom.

Externally, the home benefits from a neatly kept front lawn, a private driveway providing off-street parking, and access to the attached garage. The extensive rear garden enjoys a lawn and generous decking areas ideal for relaxing, dining, or entertaining family and friends.

Killingworth has evolved from its mining heritage into a modern, thriving town. The area offers a wide range of amenities, centred around the White

Swan Shopping Centre with supermarkets, local shops, welcoming pubs, and restaurants. Outdoor spaces include Killingworth Boating Lake, local bridlepaths, and nearby nature reserves, providing excellent opportunities for leisure and recreation. Transport links are strong, with bus services to Newcastle and surrounding areas and easy access to the A19 for commuters. Families are well served by schools including George Stephenson High School and several local primary schools, making Killingworth & Killingworth Village a vibrant, convenient, and family-friendly location.

#Killingworth #KillingworthVillage #NE12Property #FamilyLiving
#LocalAmenities #WhiteSwanCentre #OutdoorSpaces #KillingworthLake
#CommunityVibes #ModernLiving

Features

- Beautifully presented three bedroom detached home in the heart of Killingworth.
- Private rear garden with well-maintained lawn and patio space, perfect for entertaining.
- Attached garage and driveway, offering ample space for parking.
- Within walking distance to local schools, amenities and transport links.

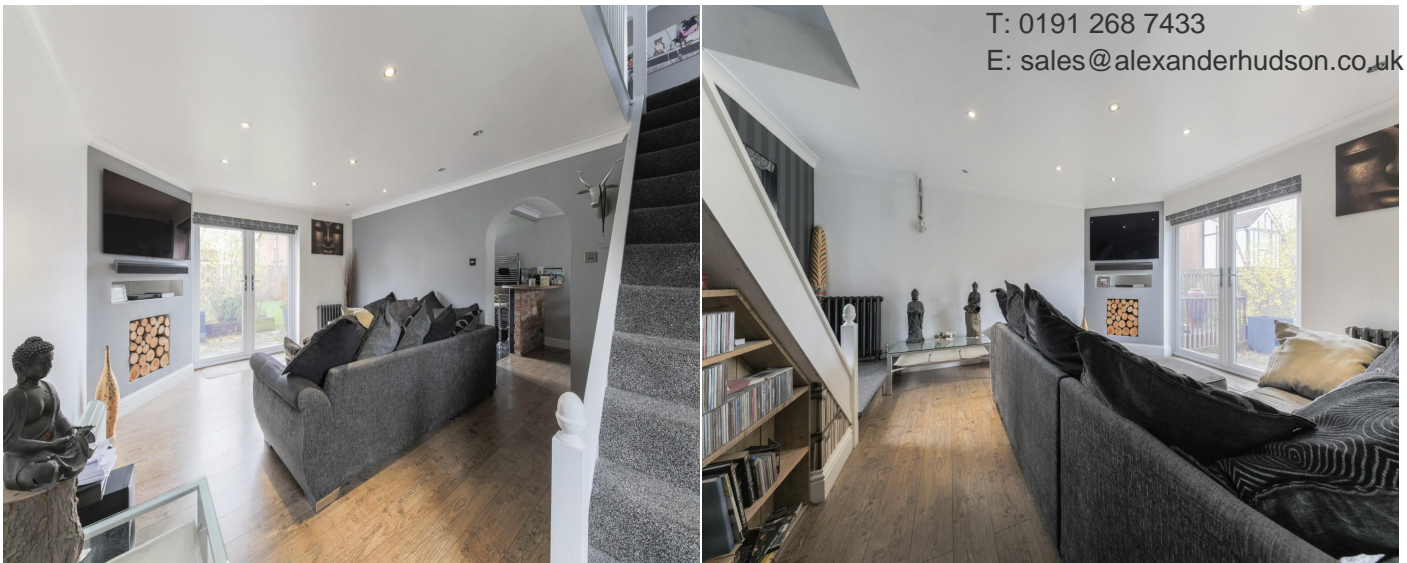
Contact Us

Alexander Hudson

The Printworks, 20 Arrow Close
Killingworth
Newcastle Upon Tyne
NE12 6QN

T: 0191 268 7433


E: sales@alexanderhudson.co.uk





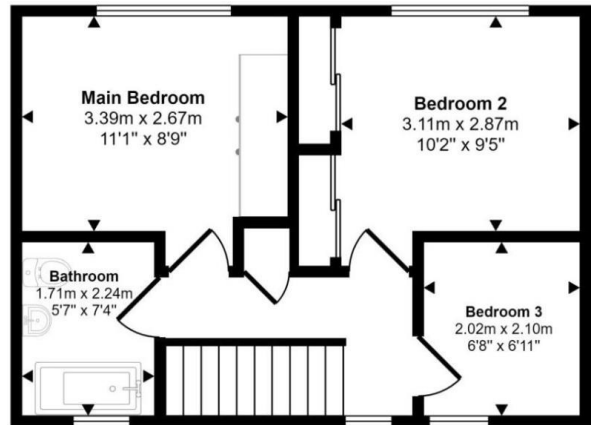
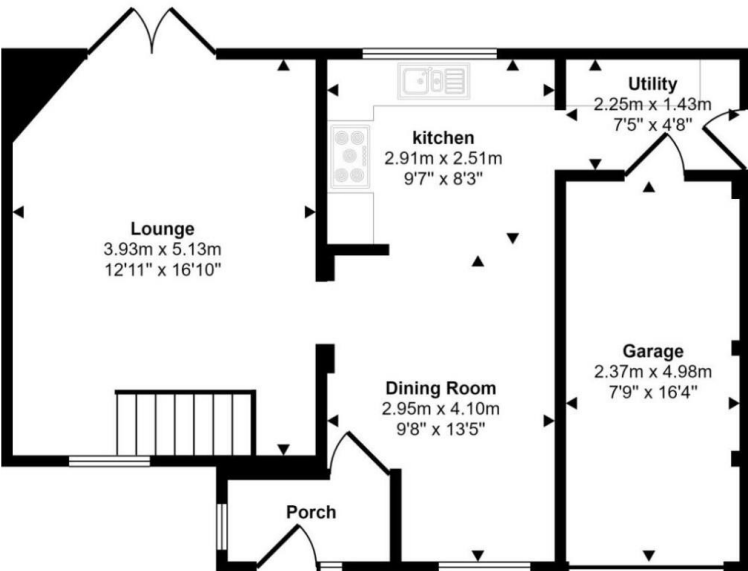


Energy Efficiency Rating

	Current	Potential
Very energy efficient - lower running costs		
(92 plus) A		
(81-91) B		85
(69-80) C	72	
(55-68) D		
(39-54) E		
(21-38) F		
(1-20) G		
Not energy efficient - higher running costs		
England & Wales	EU Directive 2002/91/EC	



Approx Gross Internal Area
95 sq m / 1021 sq ft



This floorplan is only for illustrative purposes and is not to scale. Measurements of rooms, doors, windows, and any items are approximate and no responsibility is taken for any error, omission or mis-statement. Icons of items such as bathroom suites are representations only and may not look like the real items. Made with Made Snappy 360.