

Greenhills, Killingworth, NE12

OO £160,000



Full Description

Alexander Hudson Estates are delighted to welcome to the market this stylish and modern two-bedroom semi-detached family home.

The ground floor boasts a modern, stylish open-plan design, creating a bright and spacious environment perfect for both everyday living and entertaining. The lounge provides a welcoming area to relax, while the kitchen/diner to the rear offers a functional and sociable space with direct access to the garden, enhancing the overall flow of the home.

Upstairs, the property comprises two well-proportioned bedrooms, each offering ample space for furnishings and storage. A contemporary family bathroom completes the first floor, thoughtfully designed for convenience. Externally, the property benefits from a large private driveway providing generous off-road parking. To the rear, there is a well-maintained garden with a lawn and patio area, ideal for outdoor enjoyment.

Killingworth has evolved from its mining heritage into a modern, thriving town. The area offers a wide range of amenities, centred around the White Swan Shopping Centre with supermarkets, local shops, welcoming pubs, and restaurants. Outdoor spaces include Killingworth Boating Lake, local bridlepaths, and nearby nature reserves, providing excellent opportunities

for leisure and recreation. Transport links are strong, with bus services to Newcastle and surrounding areas and easy access to the A19 for commuters. Families are well served by schools including George Stephenson High School and several local primary schools, making Killingworth & Killingworth Village a vibrant, convenient, and family-friendly location.

Features

- Immaculately presented two bedroom semi-detached property.
- Open-plan living room and kitchen diner overlooking the rear garden.
- Spacious garden with patio and lawn areas, ideal for entertaining.
- Situated within the popular area of Greenhills, close to local amenities, schooling and transport links.

Contact Us

Alexander Hudson

The Printworks, 20 Arrow Close
Killingworth

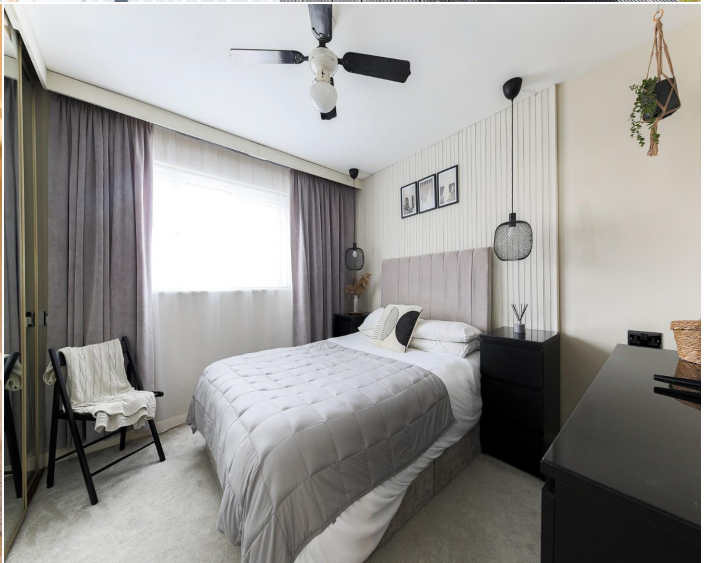
Newcastle Upon Tyne

NE12 6QN

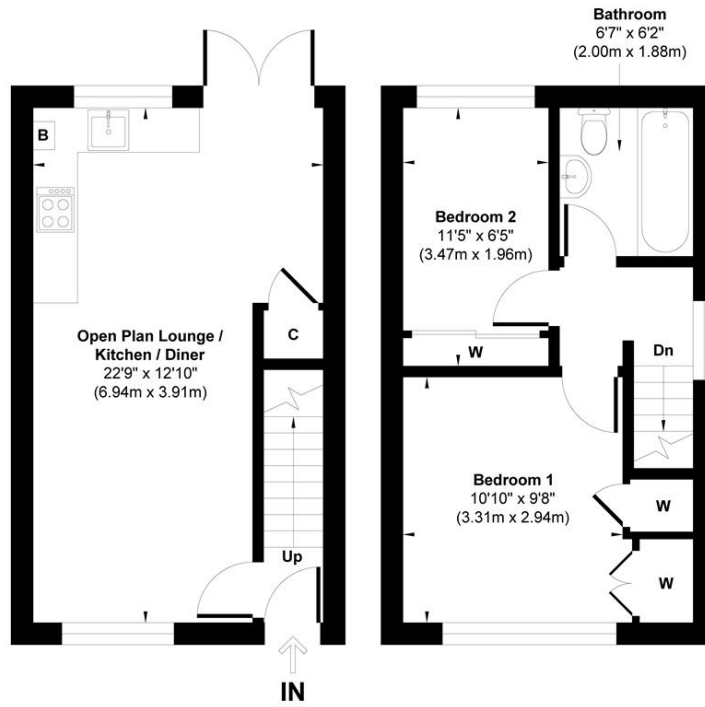
T: 0191 268 7433

E: sales@alexanderhudson.co.uk









Ground Floor
 Approximate Floor Area
 289 sq.ft
 (26.94 sq.m)

First Floor
 Approximate Floor Area
 289 sq.ft
 (26.94 sq.m)

Approx. Gross Internal Floor Area 578 sq. ft / 53.88 sq. m

Illustration for identification purpose only, measurements approximate and not to scale, unauthorized reproduction is prohibited. All rights reserved for Alexander Hudson Estates