

Middle Farm, Seghill, NE23

OO £290,000



Full Description

Alexander Hudson Estates are delighted to welcome to the market this spacious and beautifully presented three-bedroom mid-terrace family home, ideally located in the peaceful village of Seghill, NE23.

This well-maintained property offers generous living space across two floors, making it ideal for families, first-time buyers, or anyone looking for a move-in ready home in a friendly village setting.

The ground floor comprises a welcoming entrance hallway, a bright and spacious living room, and a modern open-plan kitchen and dining area, perfect for both everyday living and entertaining guests.

Upstairs, the property features three well-proportioned bedrooms, including a main bedroom with its own en-suite shower room, as well as a contemporary family bathroom.

Located between Seaton Delaval and Annitsford, the former pit village of Seghill offers a strong sense of community and easy access to local amenities, including a primary school, medical centre, post office, and convenience stores.

Excellent transport links provide quick access to surrounding towns and cities, while nearby Cramlington offers a wider range of amenities at Manor Walks Shopping Centre, including shops, cafés, restaurants, and a cinema. The Concordia Leisure Centre also provides leisure facilities such as a swimming pool, gym, bowling alley, and tennis courts.

Features

- Mid-terraced three bedroom family home.
- Beautifully presented and maintained throughout.
- Generous plot and outdoor space.
- Within walking distance to local Schools, amenities and transport.

Contact Us

Alexander Hudson

The Printworks, 20 Arrow Close
Killingworth
Newcastle Upon Tyne
NE12 6QN

T: 0191 268 7433

E: sales@alexanderhudson.co.uk









Energy Efficiency Rating		
	Current	Potential
Very energy efficient - lower running costs		
(92 plus) A		99
(81-91) B		
(69-80) C		
(55-68) D	60	
(39-54) E		
(21-38) F		
(1-20) G		
Not energy efficient - higher running costs		
England & Wales	EU Directive 2002/91/EC	

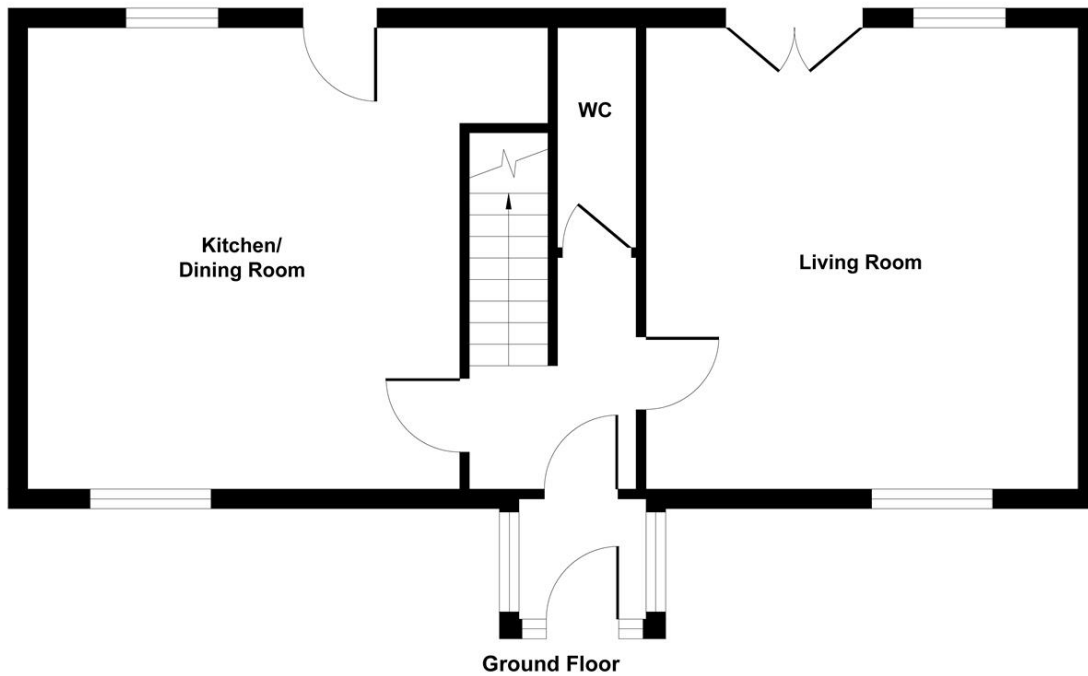
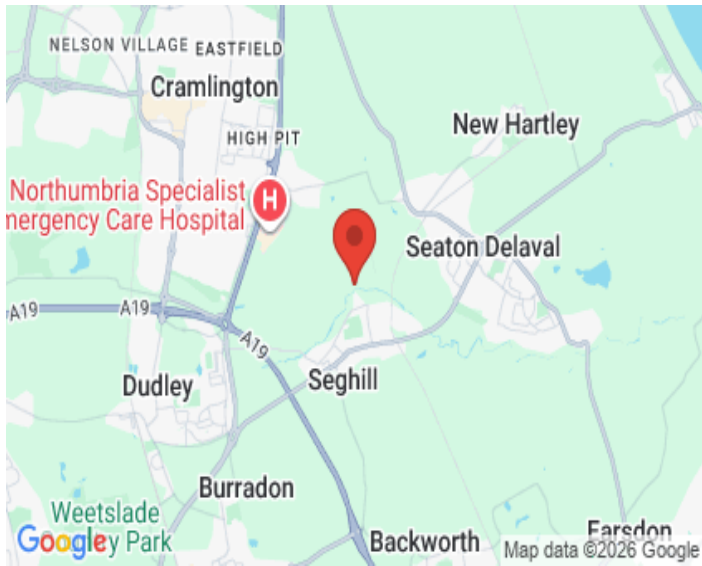
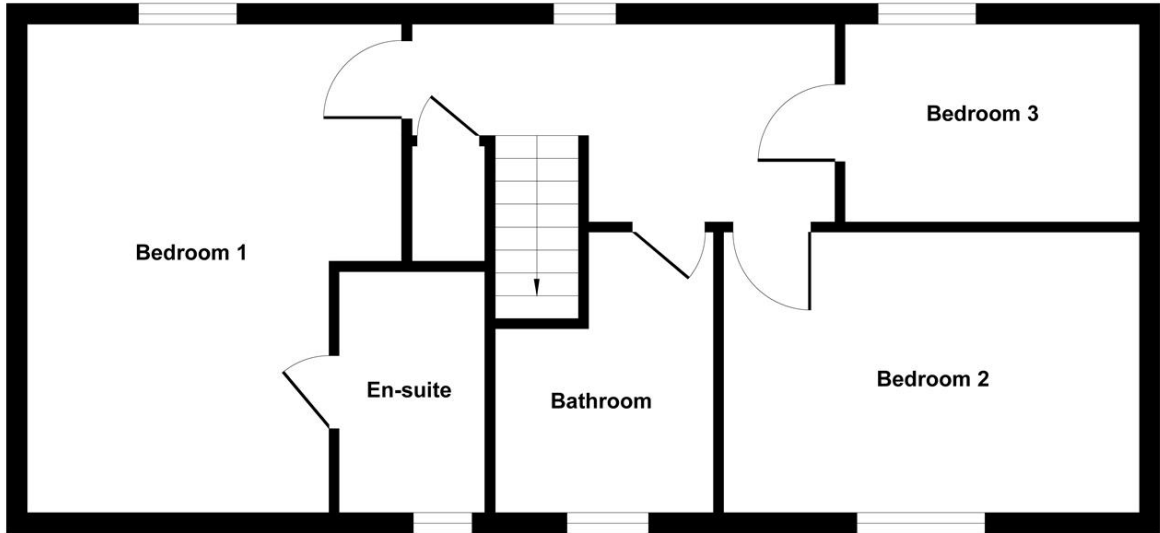


Illustration for identification purpose only, measurements approximate and not to scale, unauthorized reproduction is prohibited. All rights reserved for Alexander Hudson Estates



First Floor

Illustration for identification purpose only, measurements approximate and not to scale, unauthorized reproduction is prohibited. All rights reserved for Alexander Hudson Estates