

North Road, Wallsend, NE28

OO £110,000



Full Description

Alexander Hudson Estates is delighted to bring to the market this beautifully presented three bedroom flat, ideally positioned within a popular residential location, close to local amenities, transport links and well regarded schools.

The property offers spacious and well proportioned accommodation throughout, briefly comprising an entrance hallway leading to a bright and airy lounge, a modern kitchen, three well sized bedrooms and a modern family bathroom. The layout is practical and well balanced, suitable for a range of buyers.

Situated just 4 miles east of Newcastle upon Tyne, Wallsend is a vibrant and historically rich town that offers an excellent blend of urban convenience and community charm. Known for its Roman heritage, most notably as the eastern terminus of Hadrian's Wall. Wallsend combines fascinating history with modern day amenities, making it a desirable location for families, professionals, and investors alike.

The town boasts a range of local shops, supermarkets, cafes, and restaurants, alongside excellent leisure facilities and green spaces such as Richardson Dees Park and the scenic Wagonways. Wallsend's regenerated town centre and Forum Shopping Centre provide convenient

access to everyday essentials. For families, the area is well-served by a selection of primary and secondary schools, while strong transport links make commuting easy. Wallsend Metro Station offers frequent services to Newcastle city centre and the coast, while nearby road links via the A1058 Coast Road and A19 connect to surrounding areas with ease.

Features

- Beautifully presented three bedroom upstairs flat.
- Modern fitted kitchen and contemporary bathroom, both finished to a high standard.
- Perfectly suited to first time buyers, offering well presented accommodation.
- Within walking distance to local Schools, transport links and amenities.

Contact Us

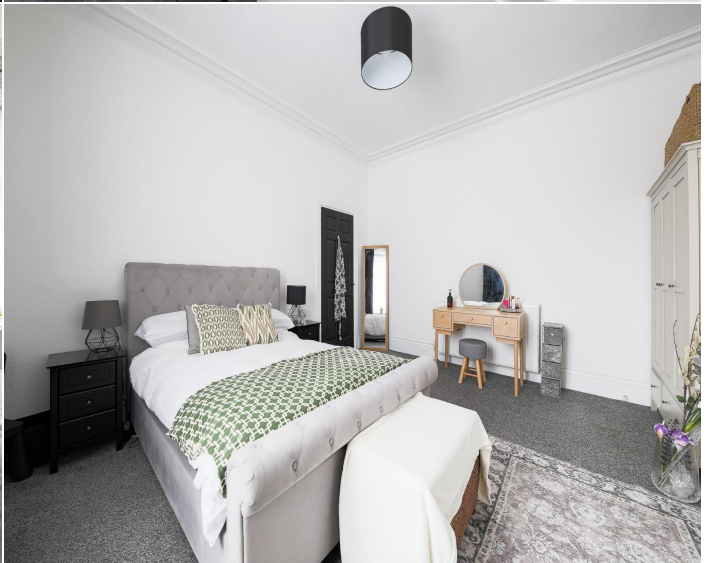
Alexander Hudson

The Printworks, 20 Arrow Close
Killingworth
Newcastle Upon Tyne
NE12 6QN

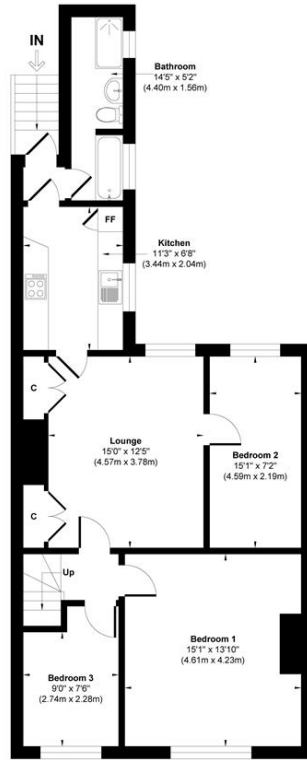
T: 0191 268 7433

E: sales@alexanderhudson.co.uk









Approximate Floor Area
834 sq.ft
(77.51 sq.m)

Approx. Gross Internal Floor Area 834 sq. ft / 77.51 sq. m

Illustration for identification purpose only, measurements approximate and not to scale, unauthorized reproduction is prohibited. All rights reserved for Alexander Hudson Estates