

Parkside, West Moor, NE12

OO £525,000



Full Description

Alexander Hudson Estates are thrilled to welcome to the market this beautifully presented four-bedroom detached home, occupying a generous corner plot at the entrance of one of West Moor's most sought-after streets.

Immaculately maintained throughout, the property opens into a stunning entrance hallway that sets the tone for the rest of the home. To the front, you'll find both a spacious living room and a separate formal dining room, perfect for entertaining or family gatherings. The modern kitchen features a breakfasting area and flows into a convenient rear lobby, complete with a downstairs WC and a separate utility room.

Upstairs, four generously sized bedrooms provide ample space for families of all sizes, with the primary bedroom benefitting from its own en-suite bathroom. A stylish family bathroom serves the remaining bedrooms.

Large gardens sit at the front and side of the property with the rear garden being overlooked by tall, leafy trees providing a tranquil and idyllic setting. A driveway at the side of the property leads to a garage, providing parking for multiple cars.

West Moor is a popular residential suburb with roots in the 19th-century coal mining communities. Today, it combines a friendly village-like atmosphere with a mix of traditional and modern homes, appealing to both families and professionals alike. Local amenities include shops, a local bakery, Lidl supermarket, independent cafés and businesses such as The Printworks and The Croft, as well as Miller & Carter Steakhouse. Green spaces include Gosforth Nature Reserve and Killingworth Boating Lake. Excellent transport links via the A19, A1, and metro stations at Longbenton and Four Lane Ends provide easy access into Newcastle. Families benefit from a well-established community centre with a playground and sports field, alongside highly regarded schools such as West Moor Primary and St. Mary's Primary, making the area a sought-after location for community-minded residents.

Features

- Immaculately presented four bedroom detached family home.
- Separate living and dining rooms offer ample entertaining space.
- Surrounded by mature gardens on this expansive corner plot.
- Situated within the heart of the sought-after area of West Moor, close to schooling, amenities and transport links.

Contact Us

Alexander Hudson

The Printworks, 20 Arrow Close
Killingworth
Newcastle Upon Tyne
NE12 6QN

T: 0191 268 7433

E: sales@alexanderhudson.co.uk



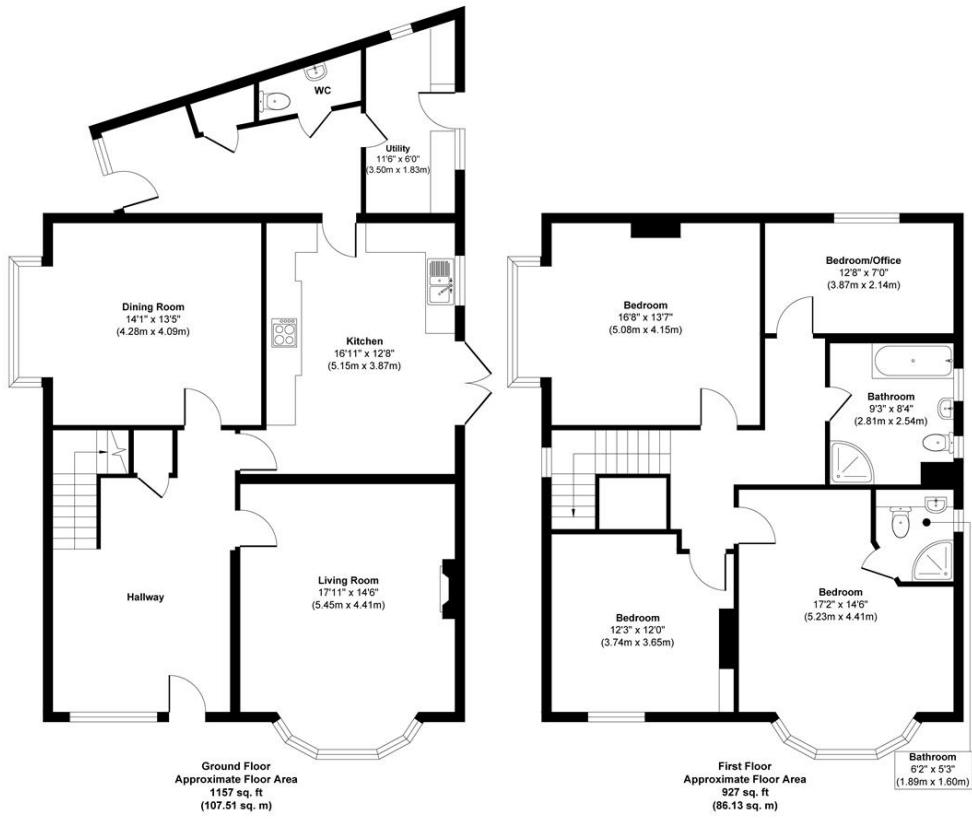












Approx. Gross Internal Floor Area 2084 sq. ft / 193.64 sq. m

Illustration for identification purpose only, measurements approximate and not to scale, unauthorized reproduction is prohibited. All rights reserved for Alexander Hudson Estates