

Percy Street, Wallsend, NE28

OIRO £80,000



Full Description

Alexander Hudson Estates proudly presents to the market this well-positioned two-bedroom ground floor apartment, offered with no onward chain and ideally situated close to local amenities and excellent transport links.

Internally, the property comprises two bedrooms, one of which is currently utilised as an additional reception room, offering flexible living accommodation. At the heart of the home is a separate dining room, complemented by a fitted kitchen and a family bathroom, completing the accommodation.

Situated just 4 miles east of Newcastle upon Tyne, Wallsend is a vibrant and historically rich town that offers an excellent blend of urban convenience and community charm. Known for its Roman heritage, most notably as the eastern terminus of Hadrian's Wall. Wallsend combines fascinating history with modern day amenities, making it a desirable location for families, professionals, and investors alike.

The town boasts a range of local shops, supermarkets, cafes, and restaurants, alongside excellent leisure facilities and green spaces such as Richardson Dees Park and the scenic Wagonways. Wallsend's

regenerated town centre and Forum Shopping Centre provide convenient access to everyday essentials. For families, the area is well-served by a selection of primary and secondary schools, while strong transport links make commuting easy. Wallsend Metro Station offers frequent services to Newcastle city centre and the coast, while nearby road links via the A1058 Coast Road and A19 connect to surrounding areas with ease.

Features

- Well-situated two bedroom ground floor flat.
- Offered to the market with no upper chain.
- Versatile internal accomodation.
- Within walking distance to local Schools, transport links and amenities.

Contact Us

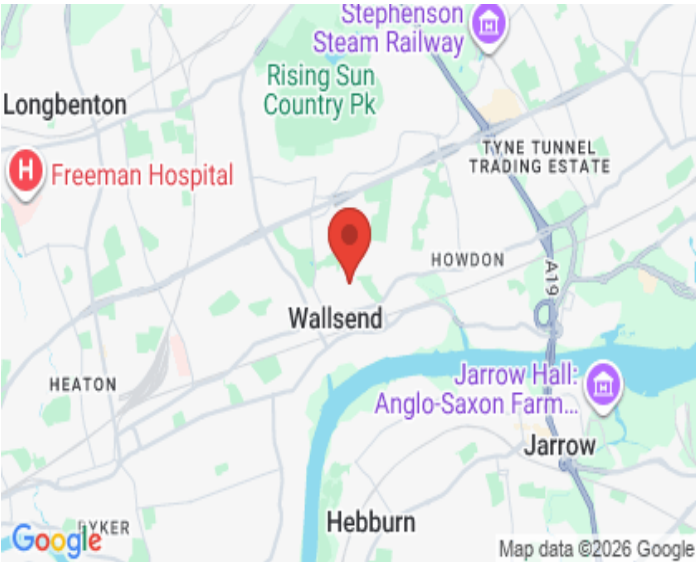
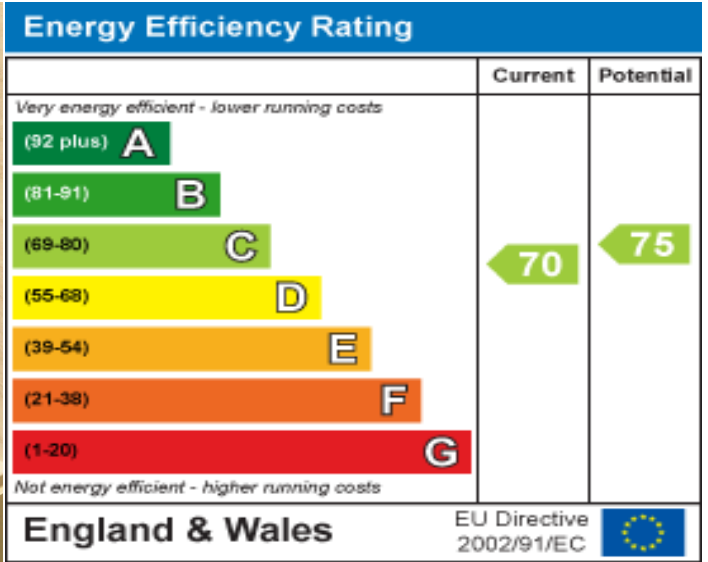
Alexander Hudson

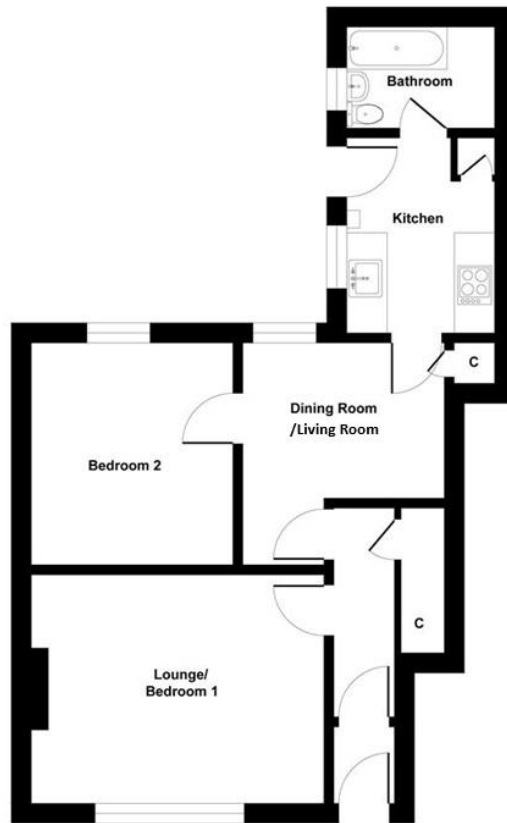
The Printworks, 20 Arrow Close
Killingworth
Newcastle Upon Tyne
NE12 6QN

T: 0191 268 7433

E: sales@alexanderhudson.co.uk







Floor Plan

Illustration for identification purpose only, measurements approximate and not to scale, unauthorized reproduction is prohibited. All rights reserved for Alexander Hudson Estates