

# Stoneleigh Avenue, Longbenton, NE12

OIRO £120,000



## Full Description

Alexander Hudson Estates is pleased to present this beautifully maintained two-bedroom ground floor apartment, ideally located in the highly desirable area of Longbenton.

Tastefully decorated and thoughtfully cared for throughout, the property features a welcoming entrance hallway, a bright and spacious living room filled with natural light, and a modern, fully integrated kitchen complete with a dedicated dining area. There are two generously sized double bedrooms and a sleek, contemporary family bathroom. Externally there are gardens to both the front and the rear of the property.

Longbenton is a well-connected suburb of Newcastle, popular with both families and professionals thanks to its excellent transport links and wide range of amenities. The area benefits from two Metro stations; Longbenton and Four Lane Ends providing quick access to Newcastle city centre, the coast, and surrounding areas. Road connections via the A1 and A19 also make commuting straightforward.

Local amenities include shops, cafés, supermarkets, and leisure facilities, with Quorum Business Park nearby providing employment opportunities and additional services. The area is also home to sports facilities, parks, and community hubs, making it a vibrant and convenient place to live.

Families are well catered for with a good selection of schools, including Longbenton High School and several local primaries, as well as nurseries and after-school clubs. With its combination of affordability, transport access, and community feel, Longbenton continues to be a sought-after residential location within North Tyneside.

## Features

- Well-presented two bedroom ground floor flat.
- Front and rear gardens.
- Ample on-street parking.
- Within walking distance to local Schools, amenities and transport links.

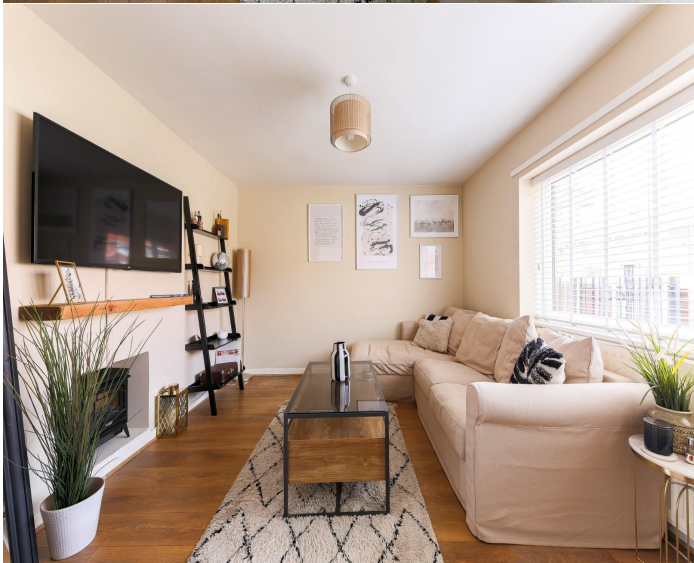
## Contact Us

### Alexander Hudson

The Printworks, 20 Arrow Close  
Killingworth  
Newcastle Upon Tyne  
NE12 6QN


T: 0191 268 7433

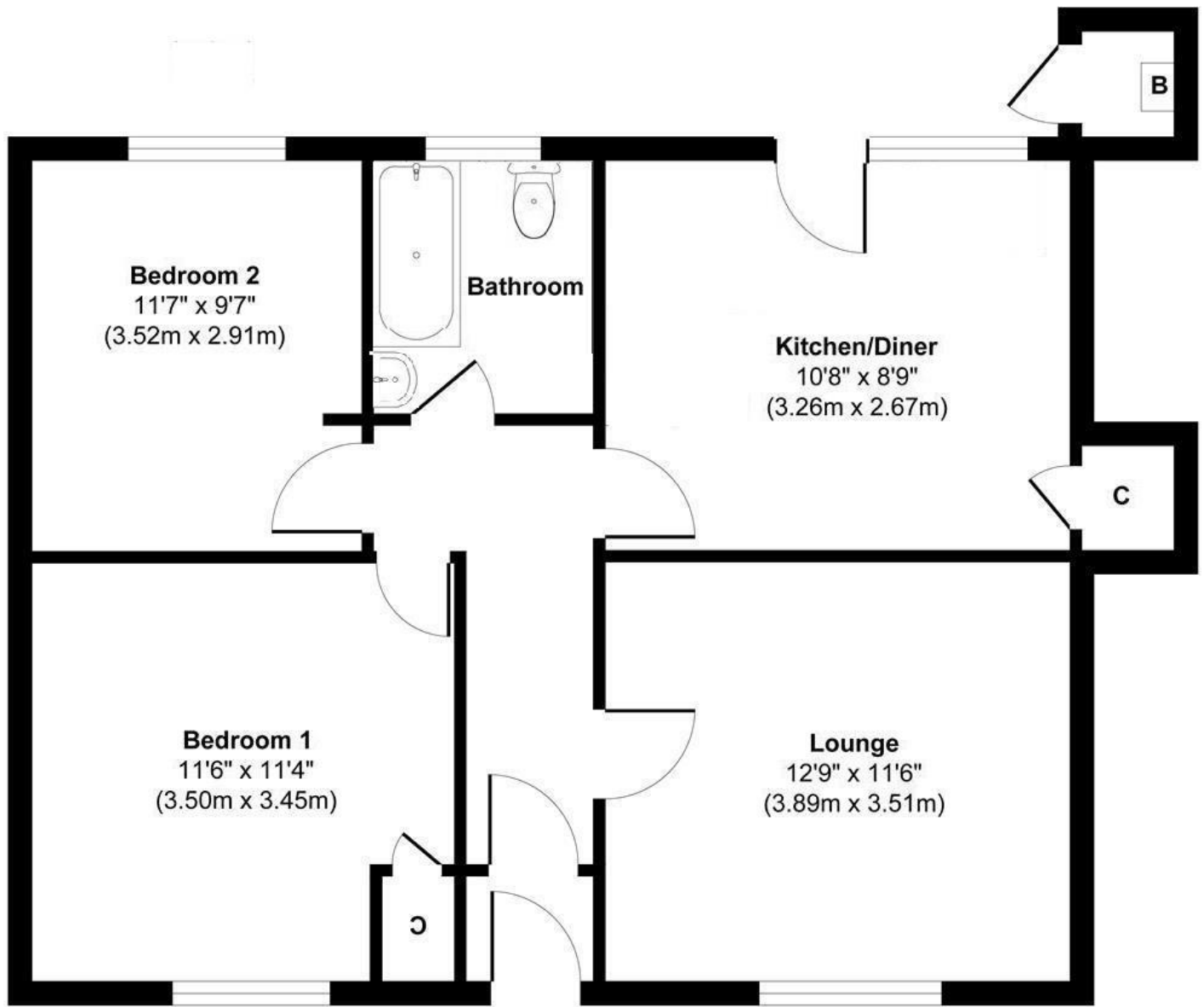
E: [sales@alexanderhudson.co.uk](mailto:sales@alexanderhudson.co.uk)







Energy Efficiency Rating		Current	Potential
<i>Very energy efficient - lower running costs</i>			
(92 plus) <b>A</b>			
(81-91) <b>B</b>			
(69-80) <b>C</b>			<b>75</b>
(55-68) <b>D</b>		<b>63</b>	
(39-54) <b>E</b>			
(21-38) <b>F</b>			
(1-20) <b>G</b>			
<i>Not energy efficient - higher running costs</i>			
<b>England &amp; Wales</b>		EU Directive 2002/91/EC	



**Floor Plan**

**Approx. Gross Internal Floor Area 651 sq. ft / 60.44 sq. m**  
 Illustration for identification purpose only, measurements approximate  
 and not to scale, unauthorized reproduction is prohibited. All rights reserved for  
 Alexander Hudson Estates