



Alexander Hudson Estates

Sales Particulars

Gladstonbury Place

Longbenton

NE12 8HH





Alexander Hudson Estates are excited to introduce to market this well maintained and extended four bedroom, semi-detached family home situated within the increasingly popular residential area of Longbenton, NE12.

Immaculately presented and maintained throughout, the property briefly comprises of a sociable open-plan kitchen, diner and living area with garden access through a separate utility room. To the first floor lie three generously sized bedrooms and modern family bathroom. A large attic conversion sits on the second floor and houses the properties fourth bedroom. Externally, the front of the property features a garden lawn and driveway which provides private, off street parking. To the rear sits a beautiful and sunny garden with raised decking areas, pergola and garden lawn.

Close-by to Benton and Four Lane Ends metro stations, this property sits in a prime location for travelling across the city, and benefits from having schools and a range of local amenities such as shops, pubs and restaurants all within walking distance. Four large parks including Tyneview Park are all within a one-mile radius of the property, offering up plenty of scenic walking routes and open green space.

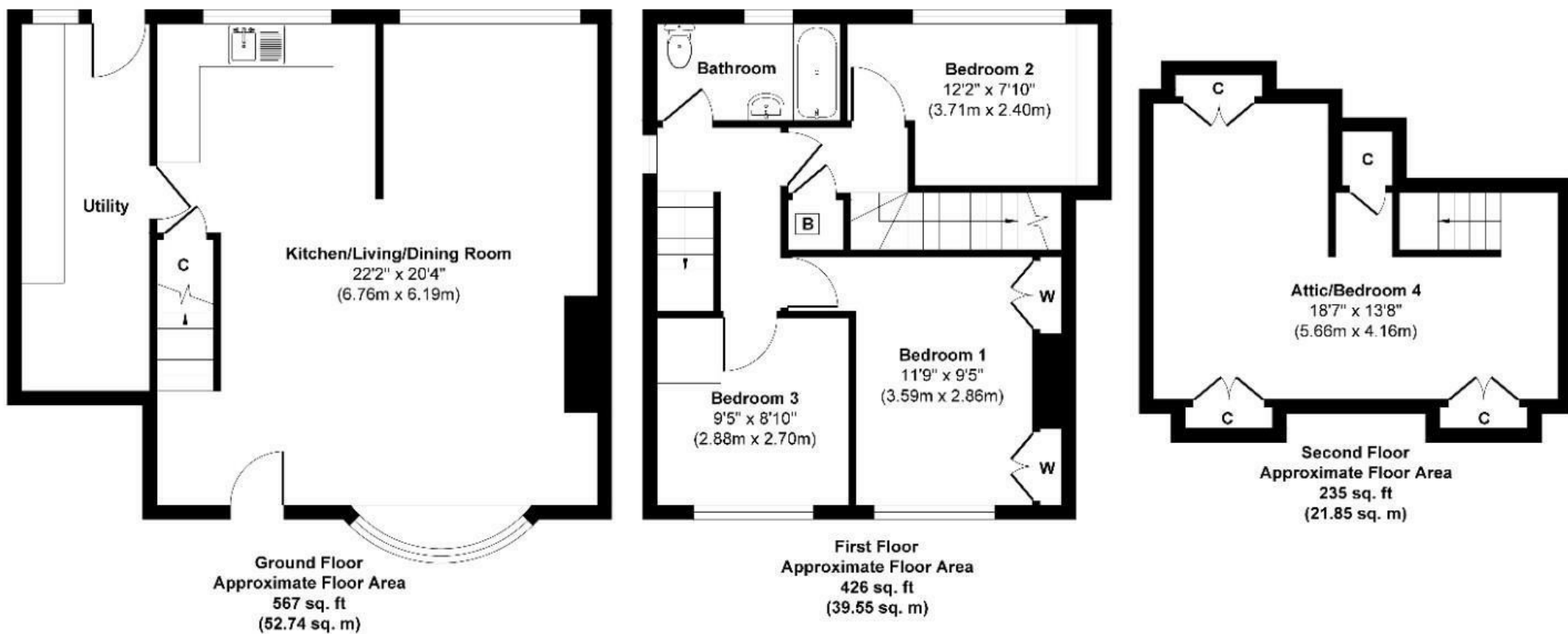


Tenure: Freehold Council tax band: A EPC Rating: D









Approx. Gross Internal Floor Area 1228 sq. ft / 114.13 sq. m