



Alexander Hudson Estates

Sales Particulars

Farne Road

Palmersville

NE12 9EA





Alexander Hudson Estates introduces to market this bright and spacious, three-bedroom, semi-detached family home with gardens in the popular residential area of Forest Hall, NE12

This well presented home is conveniently located a short walk to Forest Hall shops and amenities and briefly comprises of; entrance hallway, spacious living/ dining room, kitchen leading to a sunroom extension. To the first floor sits three generously sized bedrooms and a family bathroom. Externally, the front of the property benefits from a paved driveway providing ample off street parking for multiple vehicles. To the rear, sits a low maintenance tiered garden with patio area, artificial lawn and garden shed.

The Killingworth Shopping Centre, White Swan Centre and The Lakeside Centre are all close-by along with both Killingworth Boating Lake with its bridleways and Lakeside Park offering idyllic settings. The property sits close to a bus route and metro station with links to Newcastle City Centre, Quorum, Balliol and Gosforth Business Parks; whilst the A19 is only a short drive away for trips further afield.

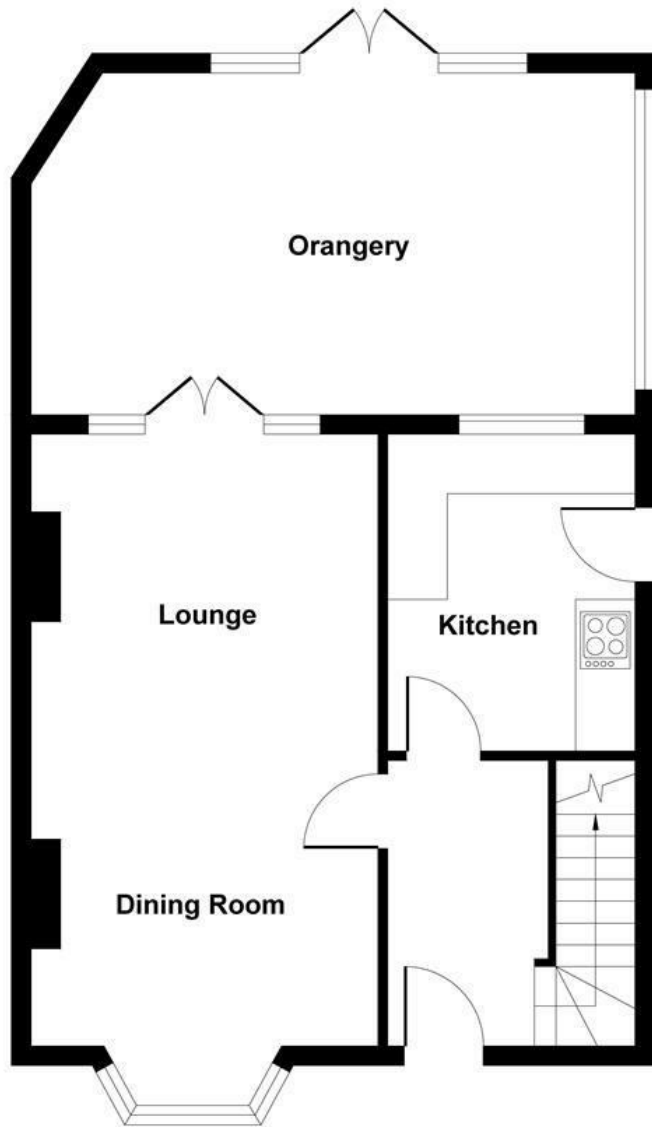


Tenure: Freehold Council tax band: A EPC Rating: C

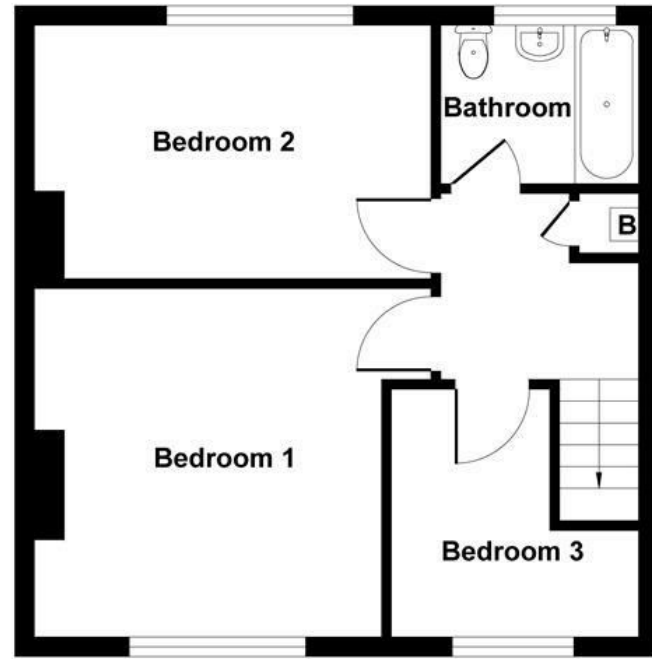








Ground Floor



First Floor

Illustration for identification purpose only, measurements approximate and not to scale, unauthorized reproduction is prohibited. All rights reserved for Alexander Hudson Estates