



Alexander Hudson Estates

Sales Particulars

Megstone Avenue

Whitelea Chase

NE23 6TU





Alexander Hudson Estates are excited to introduce to market this well presented, Three bedroom, semi-detached family home, situated within the increasingly popular Whitelea Chase Estate, NE23.

Tastefully decorated throughout, the property briefly comprises of: entrance hallway, spacious living/ dining room and kitchen. To the first floor lie three generously sized bedrooms and a family bathroom. Externally, the front of the property is well maintained and features a garden lawn and paved driveway, which provides ample off street parking and access to the attached garage. To the rear sits a nicely presented, private tiered garden with patio area and garden lawn.

The property is ideally located and within walking distance to Cramlington shops which offers a range of different transport links, amenities and leisure facilities. Local schools lie within a 15 minute walk from the property and include Cramlington Learning Village and Hareside Primary School.



Tenure: Freehold Council tax band: B EPC Rating: D

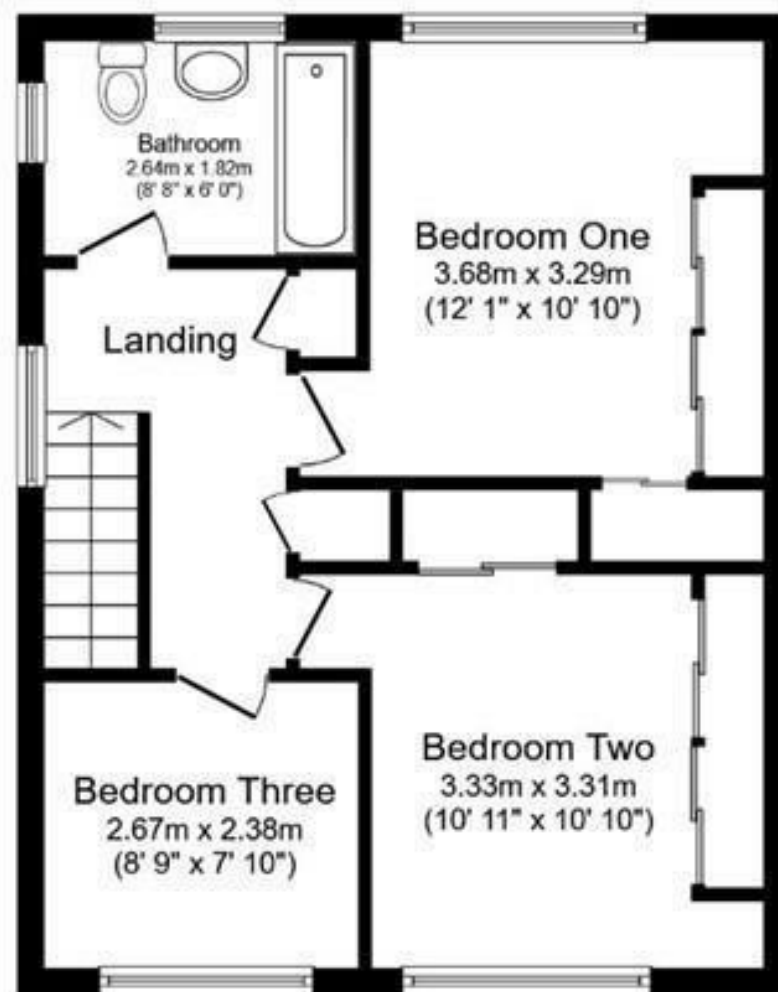








Ground Floor



First Floor

Total floor area 111.0 sq.m. (1,194 sq.ft.) approx

This floor plan is for illustrative purposes only. It is not drawn to scale. Any measurements, floor areas (including any total floor area), openings and orientation are approximate. No details are guaranteed.