



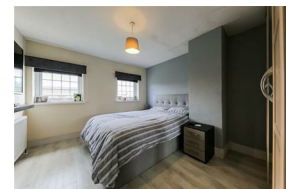
# Alexander Hudson Estates

---

Sales Particulars

# Alexander Hudson Estates

Georgian Court, West Moor, NE12



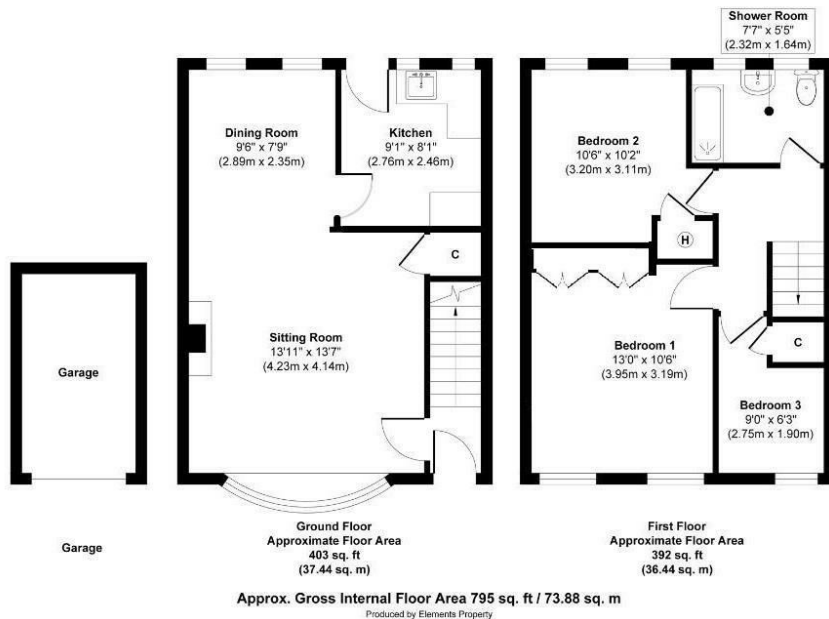
# The Property

Alexander Hudson Estates are delighted to welcome to the market this charming three-bedroom mid-terrace home, complete with front and rear gardens, and the added benefit of a detached garage. Situated in the increasingly popular residential area of West Moor, the property enjoys close proximity to local shops, restaurants, and excellent transport links. Renowned schools are also nearby, making this an ideal opportunity for families seeking a well-connected and desirable location.

Filled with natural light and character throughout, the property briefly comprises an entrance hallway, a spacious living room with a bay window, a dining area, and a fitted kitchen. Upstairs, there are three bedrooms as well as a family bathroom.

The front and rear gardens offer plenty of outdoor space, with mature trees providing privacy and a relaxing backdrop to the rear garden, perfect for enjoying sunny days. A detached garage to the rear provides valuable off-street parking and additional storage.

Ideally positioned near Gosforth, Balliol, and Quorum Business Parks, and with easy access to the A1 and A19, the home is well suited to commuters. West Moor is also adjacent to Killingworth, which offers a range of amenities including The Killingworth Centre with a large Morrisons, the White Swan Centre (featuring a GP surgery, café, activity hall, and library), and the Lakeside Centre with leisure facilities including a swimming pool and soft play area for children.



Freehold  
Council Tax: B  
EPC Rating: 64





---

Alexander Hudson Estates  
The Printworks  
20 Arrow Close  
NE12 6QN

0191 268 7433  
[sales@alexanderhudson.co.uk](mailto:sales@alexanderhudson.co.uk)