



Alexander Hudson Estates

Sales Particulars

Alexander Hudson Estates

White House Drive, Killingworth, NE12



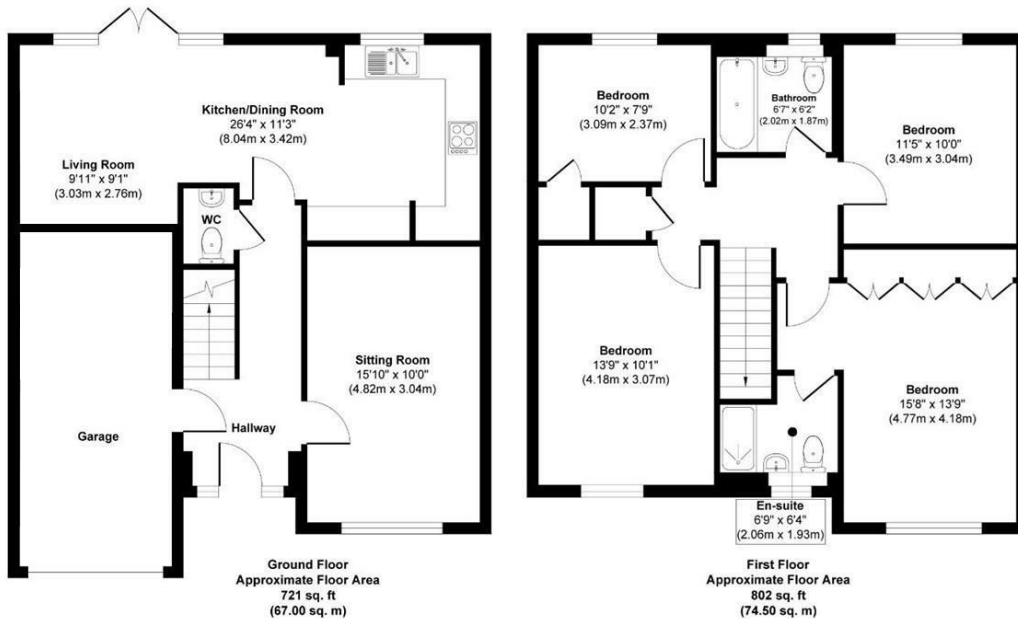
The Property

Alexander Hudson Estates are delighted to welcome to the market this four bedroom, detached family home. Situated in the increasingly popular Moorfields Estate, neighbouring a range of amenities, schooling and transport links.

Immaculately presented throughout, the property briefly comprises of an entrance hallway with a living room, downstairs WC and open-plan kitchen dining area and an extra snug to the side of the property offering additional space for entertaining. On the first floor lies a family bathroom and four generously sized bedrooms with the main bedroom benefitting from an ensuite shower room and another is currently being used as an extra sitting room. Externally, the front of the property features a well-maintained lawn and a large paved driveway which provides off street private parking for multiple vehicles along with access to the attached garage. To the rear of the property lies a large lawned garden.

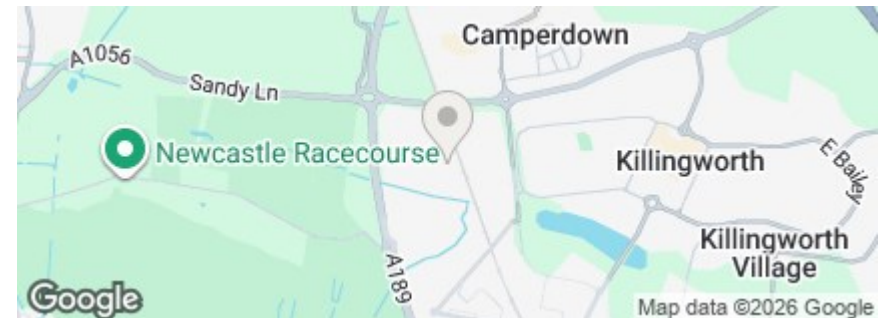
Close to local schools, bridleways, parks and Miller & Carter restaurant and bar, this represents a brilliant opportunity to purchase a family home close to amenities and within easy reach of both the City & Coast. Ideal location for commuting to Newcastle city centre, the various office parks at Gosforth, Cobalt and Quorum along with easy access to key transport routes across the city and further afield.

Freehold
Council Tax: E
EPC Rating: 84



Approx. Gross Internal Floor Area 1523 sq. ft / 141.50 sq. m (Excluding Garage)

Illustration for identification purpose only, measurements approximate and not to scale, unauthorized reproduction is prohibited. All rights reserved for Alexander Hudson Estates





Alexander Hudson Estates
The Printworks
20 Arrow Close
NE12 6QN

0191 268 7433
sales@alexanderhudson.co.uk