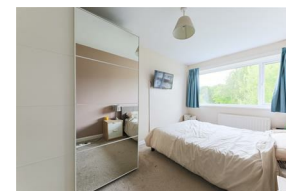
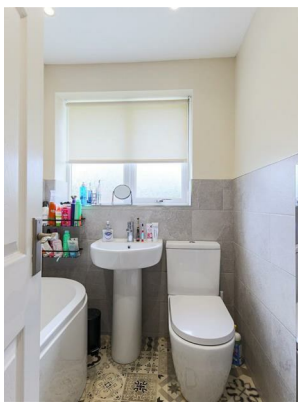




Alexander Hudson Estates

Sales Particulars

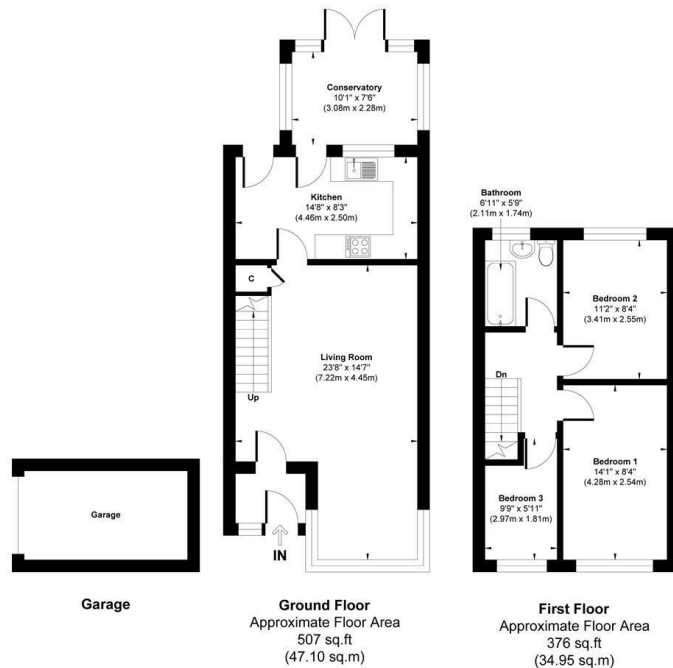


The Property

Alexander Hudson Estates are delighted to welcome to the market this well proportioned three bedroom family home, well positioned with quiet walkway frontage, gardens to front and rear and single garage in the heart of Killingworth NE12.

The attractively presented accommodation is accessed via entrance door to front and an entrance lobby, which in turn gives access to a generous lounge, with bay window to the front for lovely natural light and open staircase to the first floor. Fitted Kitchen Breakfast room, including integrated appliances and access door to the conservatory, providing a lovely versatile additional reception space to the ground floor and access to the rear garden. To the first floor there are two double bedrooms, single bedroom and family bathroom/wc including over bath shower. Externally there is an open plan garden to front with enclosed lawned rear garden which has patio and rear access gate to a single garage.

Killingworth has evolved from its mining heritage into a modern, thriving town. The area offers a wide range of amenities, centred around the White Swan Shopping Centre with supermarkets, local shops, welcoming pubs, and restaurants. Outdoor spaces include Killingworth Boating Lake, local bridlepaths, and nearby nature reserves, providing excellent opportunities for leisure and recreation. Transport links are strong, with bus services to Newcastle and surrounding areas and easy access to the A19 for commuters. Families are well served by schools including George Stephenson High School and several local primary schools, making Killingworth & Killingworth Village a vibrant, convenient, and family-friendly location.



Approx. Gross Internal Floor Area 883 sq. ft / 82.05 sq. m

Illustration for identification purpose only, measurements approximate and not to scale, unauthorized reproduction is prohibited. All rights reserved for Alexander Hudson Estates

Freehold
Council Tax: A
EPC Rating: 72





Alexander Hudson Estates
The Printworks
20 Arrow Close
NE12 6QN

0191 268 7433
sales@alexanderhudson.co.uk