

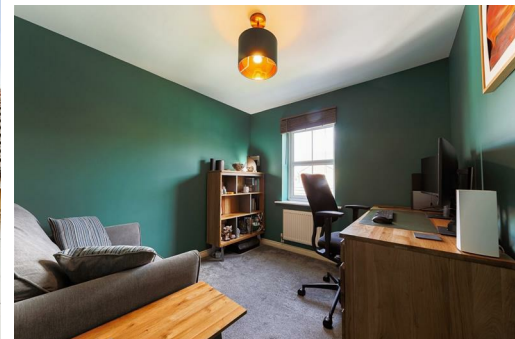


Alexander Hudson Estates

Sales Particulars

Alexander Hudson Estates

Meadow Vale, Shiremoor, NE27



The Property

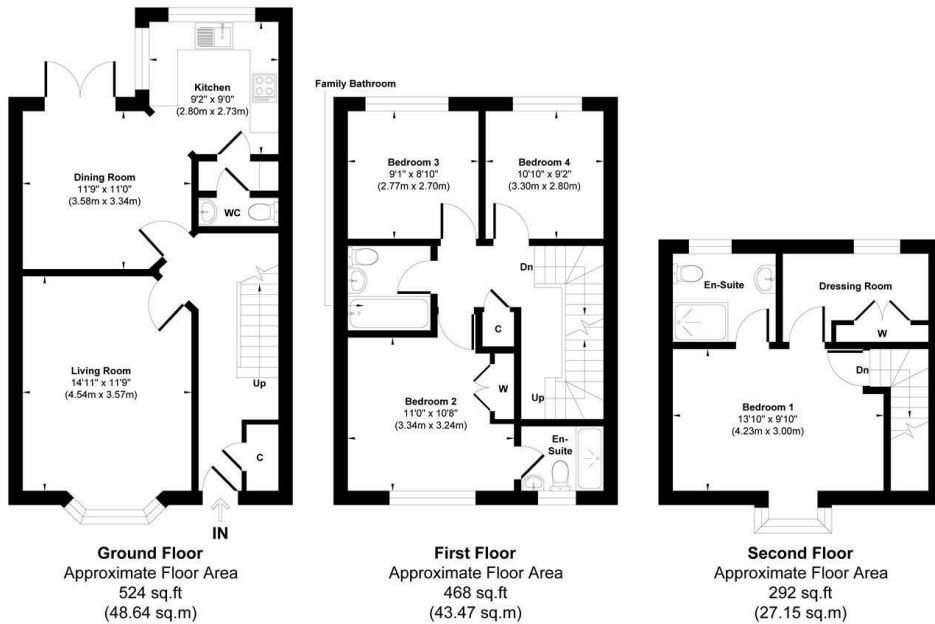
Alexander Hudson Estates are pleased to welcome to the market this beautifully presented four bedroom detached family home, enjoying a pleasant position on Northumberland Park in Shiremoor NE27

The property offers versatile and well proportioned accommodation across three levels whilst enjoying gardens to front and rear, and Single garage.

The main entrance door leads into a welcoming entrance hall with stairs to the first floor. Light and airy lounge to the front elevation and open kitchen dining room extends across the rear. The Kitchen includes integrated appliances and dining area enjoys French doors leading out to the rear. Separate utility room with access to the ground floor wc. To the first floor; A double bedroom has fitted wardrobes and en suite shower room/wc. Two further good sized bedrooms and a family bathroom/wc. Stairs then continue to the second floor, with a generous master bedroom suite including dressing room with built in wardrobes and en suite shower room/wc. Externally open garden to front with driveway parking and detached garage. To the rear is a generous enclosed lawned garden with patio.

Northumberland Park is a popular and well connected residential area, offering excellent transport links, local amenities, schools, leisure facilities, green spaces, Silverlink Retail Park and easy access to Newcastle and the coastline.

Freehold
Council Tax: E
EPC Rating: 75



Approx. Gross Internal Floor Area 1284 sq. ft / 119.26 sq. m

Illustration for identification purpose only, measurements approximate and not to scale, unauthorised reproduction is prohibited. All rights reserved for Alexander Hudson Estates



Alexander Hudson Estates
The Printworks
20 Arrow Close
NE12 6QN

0191 268 7433
sales@alexanderhudson.co.uk