



Alexander Hudson Estates

Sales Particulars

Alexander Hudson Estates

Paddock Lane, Moorfields, NE12



The Property

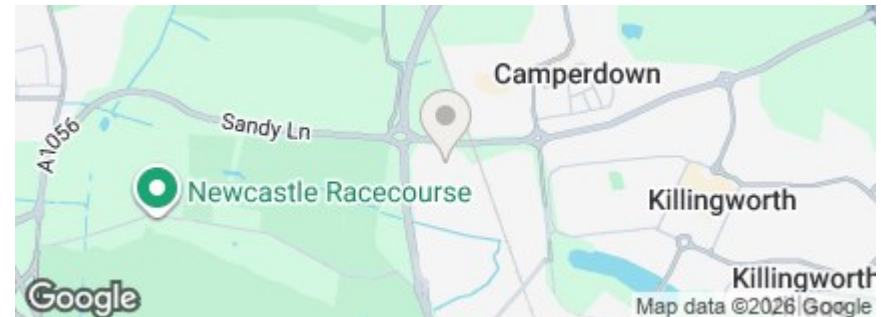
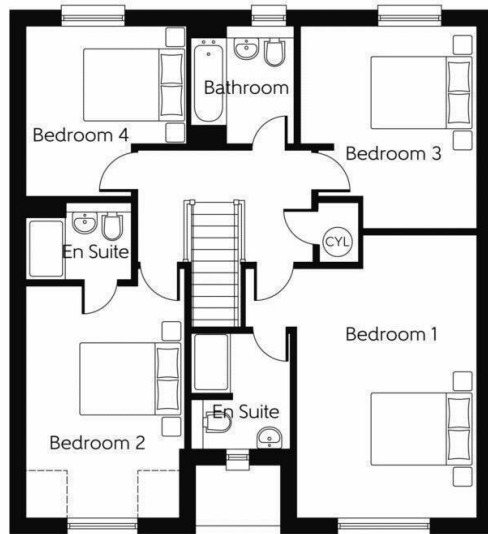
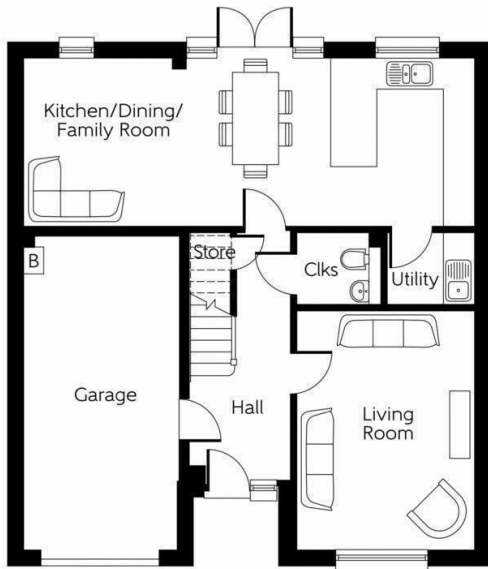
Available August 2026 | Furnished | Enquire now to arrange a viewing

Alexander Hudson Estates are pleased to welcome to the market, this well-presented, four bedroom, detached family home situated within the increasingly popular residential development of Moorfields in Killingworth, NE12.

The property is offered to the market fully furnished and briefly comprises of a welcoming entrance hallway, cloakroom WC, a bright and spacious living room, and a fully integrated open-plan kitchen, dining and family area, perfect for modern living, along with a separate utility room. To the first floor are four generously sized bedrooms, two of which benefit from stylish en-suite shower rooms, and a contemporary family bathroom. Externally, a large driveway and integral garage provide ample private parking and storage. To the rear, a well-maintained, spacious lawned garden offers a perfect space for relaxing or entertaining during the warmer months.

Situated close to both The Killingworth Shopping Centre and the White Swan Centre making it great for local amenities, with excellent transport links to Newcastle City Centre, Quorum, Balliol and Gosforth Business Parks; whilst the A19 is only a short drive away for trips further afield.

Council Tax: F
EPC Rating: 84





Alexander Hudson Estates
The Printworks
20 Arrow Close
NE12 6QN

0191 268 7433
sales@alexanderhudson.co.uk